

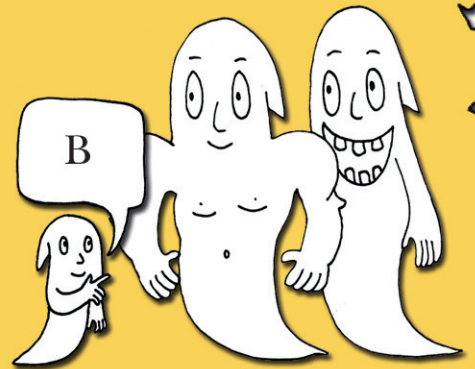
SPOJ DLOUHÉ FORMY SLOVESA BÝT S KRÁTKÝMI.

I AM
YOU ARE

HE IS
SHE IS
IT IS

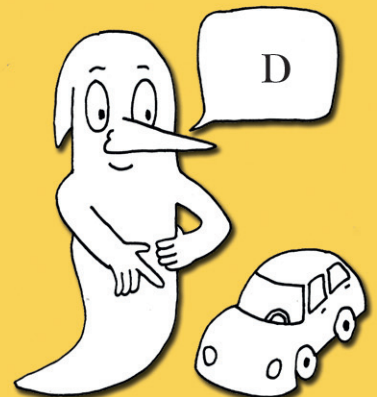
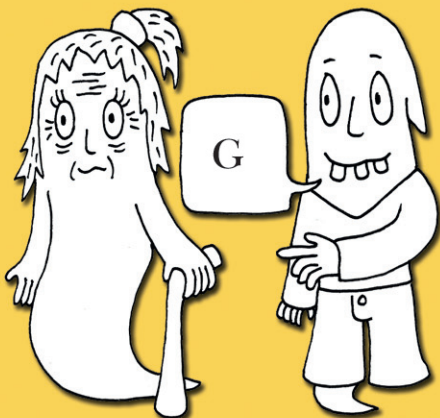
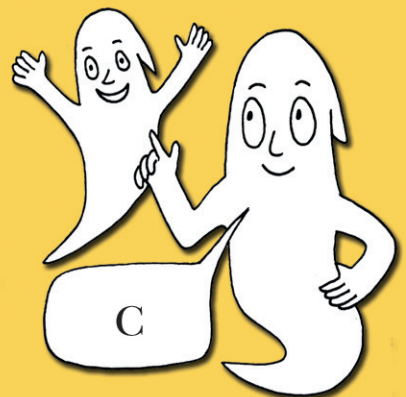
WE ARE
YOU ARE
THEY ARE

YOU'RE
HE'S
SHE'S
WE'RE
YOU'RE
THEY'RE
I'M
IT'S

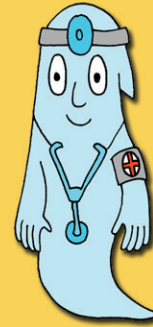


PŘIŘAĎ SPRÁVNĚ VĚTY K BUBLINÁM.

- G SHE'S OLD. YOU'RE BIG.
 HE'S HAPPY.
 I'M OLD.
 IT'S SMALL.
 WE'RE SMALL.
 THEY'RE SMALL.



DOPLŇ TVARY SLOVESA BÝT (IS / ARE) DO VĚT.



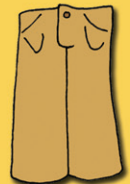
BOB IS SMALL.
 SHE _____ HAPPY.
 I _____ IN THE KITCHEN.
 JACK _____ IN THE TOILET.
 THEY _____ FAST.
 WE _____ COOKS.
 YOU _____ SAD.
 TOM _____ A DOCTOR.



VYBARVI SLOVÍČKA V TABULCE. CO ZBYLO ZA PÍSMENKA?

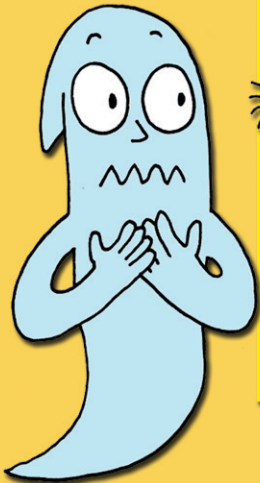


A	P	P	L	E	T	E	N	O	G	D	S	S
T	E	O	E	L	O	I	S	R	P	R	K	H
R	A	T	M	H	M	I	C	A	E	E	I	I
O	R	A	O	B	A	N	A	N	A	S	R	R
U	S	T	N	S	T	U	R	G	S	S	T	T
S	C	O	R	N	O	B	R	E	P	E	S	R
E	P	E	P	P	E	R	O	A	N	D	H	P
R	E	S	R	F	S	A	T	E	C	T	I	
S	H	A	T	J	E	A	N	S			R	
	B	O	O	T	S	J	A	C	K	E	T	



DOPLŇ ODPOVĚDI K OTÁZKÁM.

- H WHAT'S YOUR NAME?
____ HOW ARE YOU?
____ DO YOU LIVE IN A HOUSE?
____ WHERE ARE YOU FROM?
____ WHERE ARE YOU?
____ HOW OLD ARE YOU?
____ DO YOU HAVE A DOG?
____ WHAT DO YOU LIKE?



YES, I DO. HIS NAME'S TOM.

I'M FROM ENGLAND.

YES, I DO. IT'S NICE.

I'M FIVE.



A



B



C



D

I'M FINE.

I LIKE LUCY.

I'M AT HOME.

I'M BOB.



E



F



G

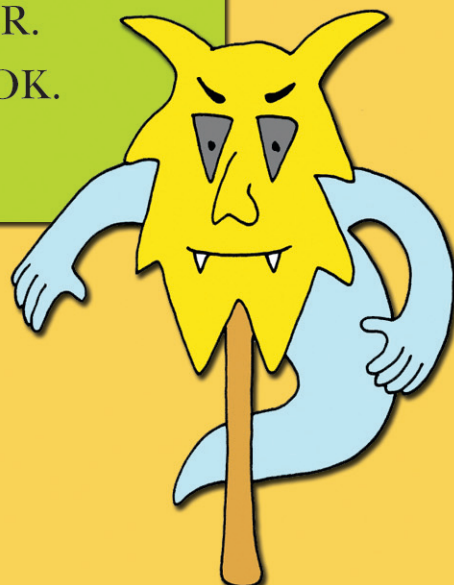


H

DOPLŇ TVARY SLOVESA BÝT (IS / ARE) DO VĚT.



MY BROTHER IS SMALL.
 MY CAR _____ OLD.
 MY DOG _____ YOUNG.
 MY FATHER _____ FOURTY.
 TOM AND LUCY _____ HAPPY.
 THEY _____ FROM ENGLAND.
 MY TEACHER _____ SUPER.
 MY SISTER _____ A COOK.
 WE _____ AT HOME.



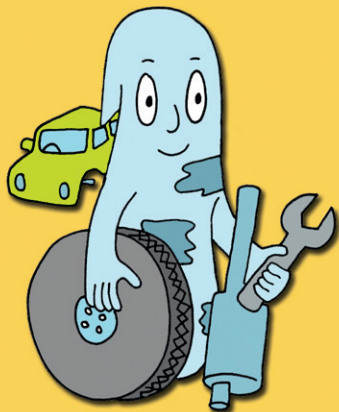
VYLUŠTI TAJENKU.

			E	D	N	E	S	D	A	Y
L			M	O	N					
			E	G						
	M		L	K						
C	O	O								
	T	U		S	D	A	Y			
		B		D	R	O	O	M		
G	R	A		D	M	A				
		D	O							
U	N	C		E						
	F	R		D	A	Y				
				I	S	T	E	R		
				A	I	R				



DOPLŇ DO VĚT TVARY HE'S / SHE'S / THEY'RE.

A POSTWOMAN.

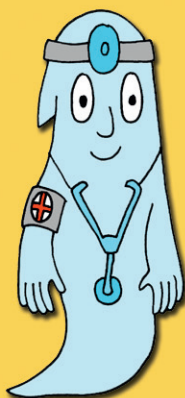


HE'S A MECHANIC.



A TEACHER.

A WAITER.

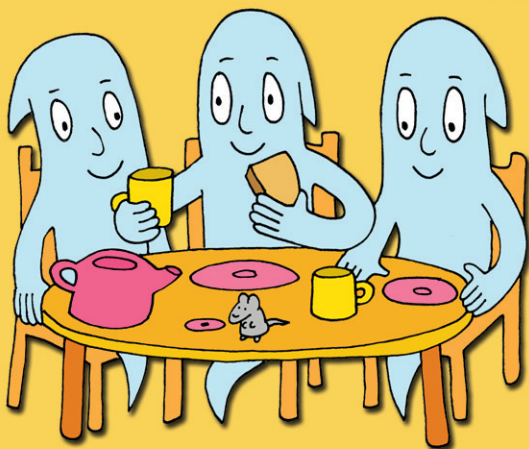


A DOCTOR.

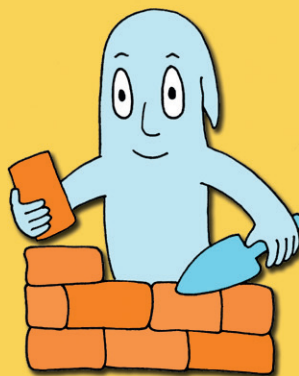


A TAXI DRIVER.

A BUILDER.



HAPPY.



A POLICEMAN.